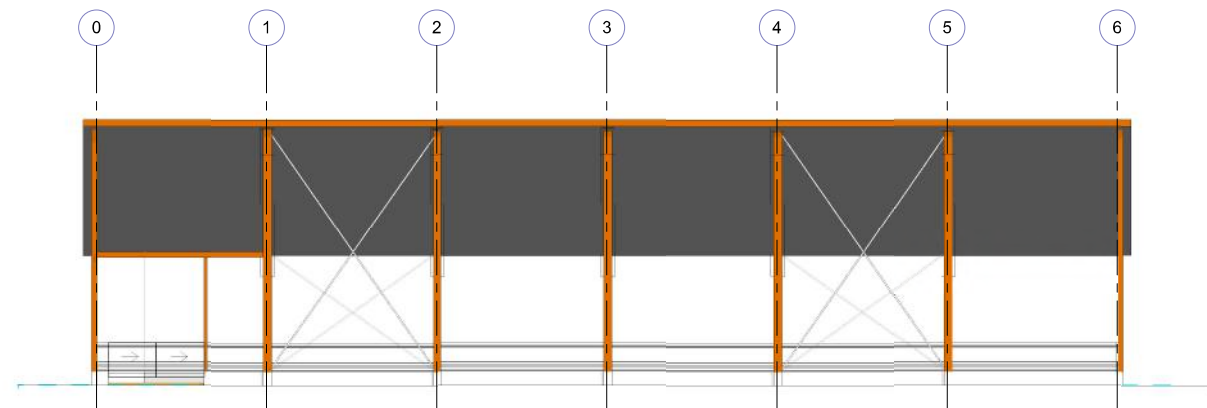
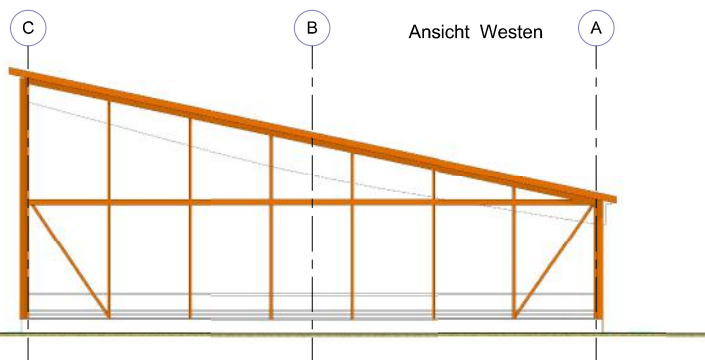


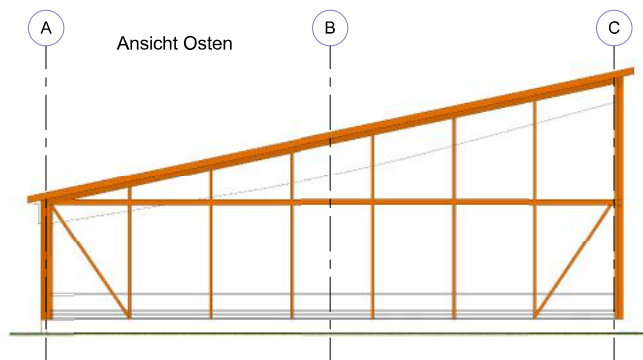
Ansicht Norden



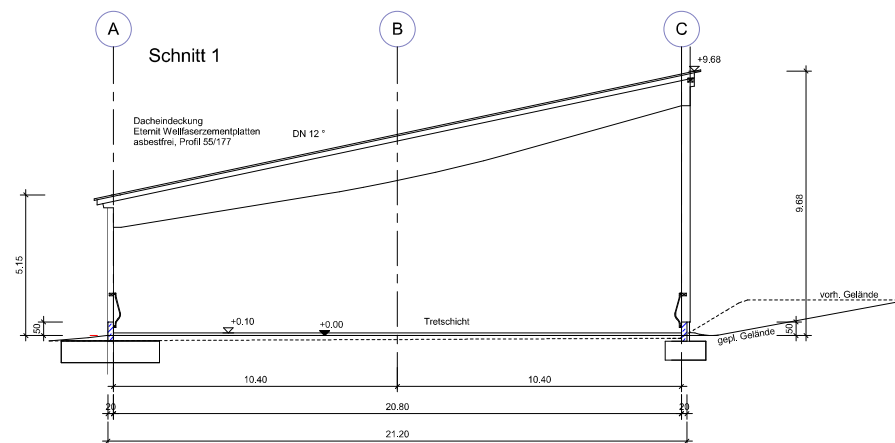
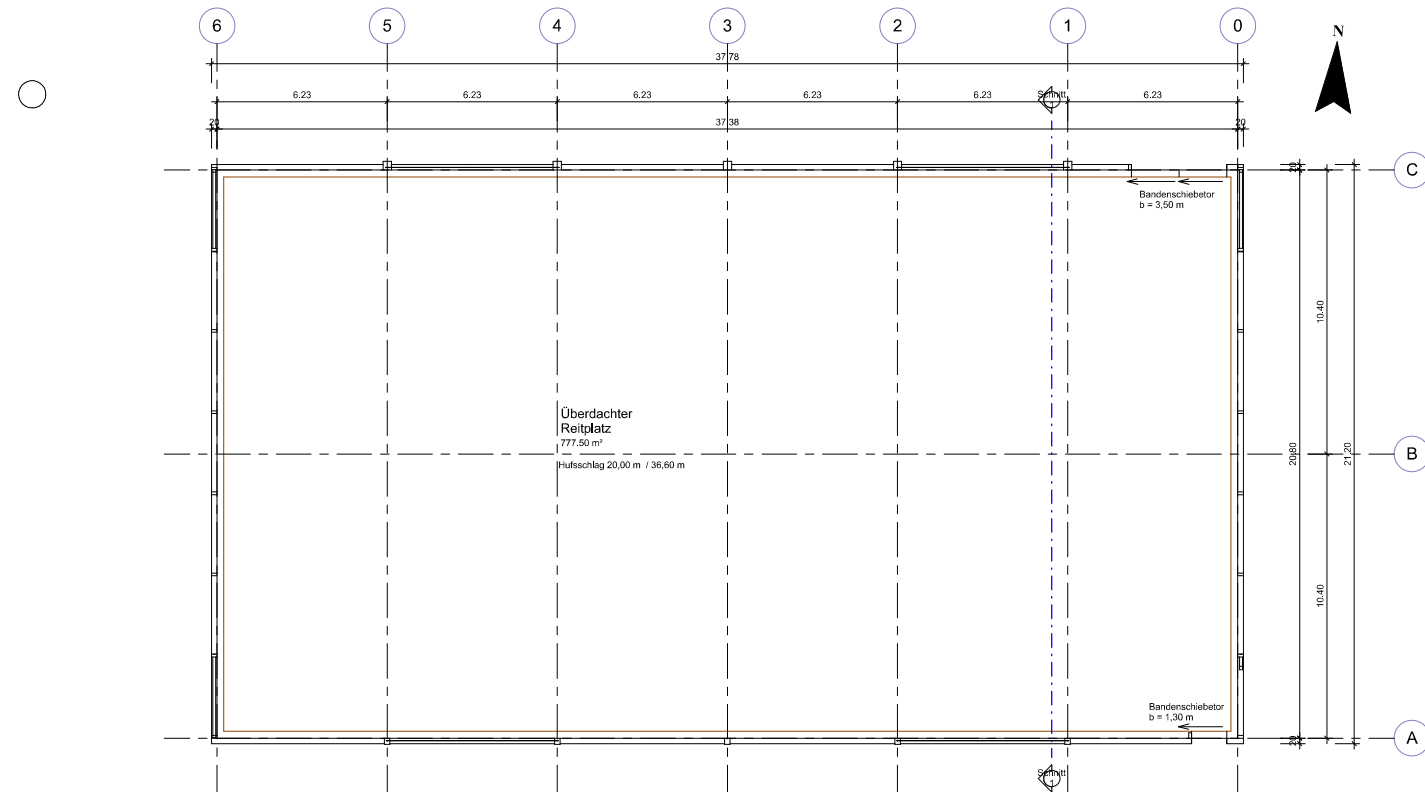
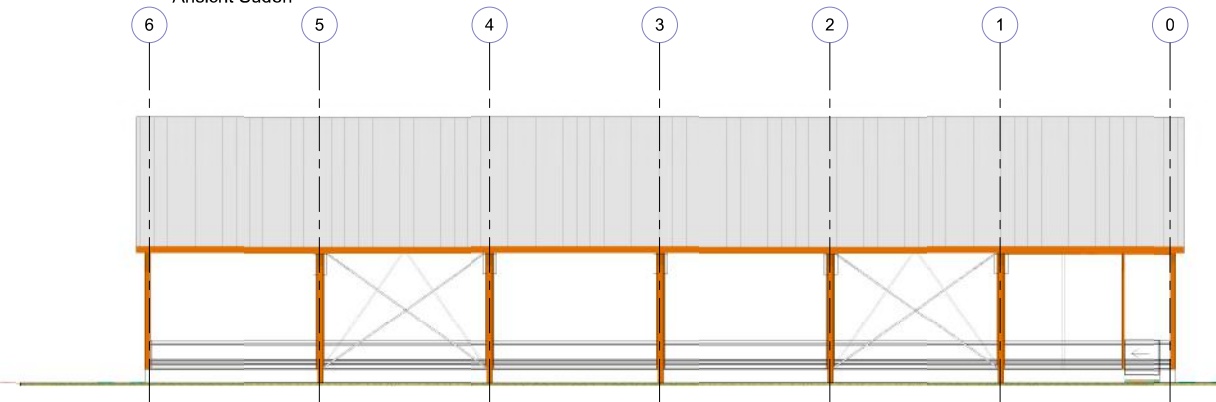
Ansicht Westen



Ansicht Osten



Ansicht Süden



Projekt	
Bauherr	
Stand	Genehmigungsplanung
Inhalt	Grundriss, Schnitt und Ansichten
Datum	0
Plannummer	Plan 1
Maßstab	1 : 100

HBB
HOLZBAU GmbH
 Bergstraße 15
 89365 Rißingen
 Telefon 08222/3068
 Telefax 08222/7299
 info@hbb-holzbau.de
 www.hbb-holzbau.de